



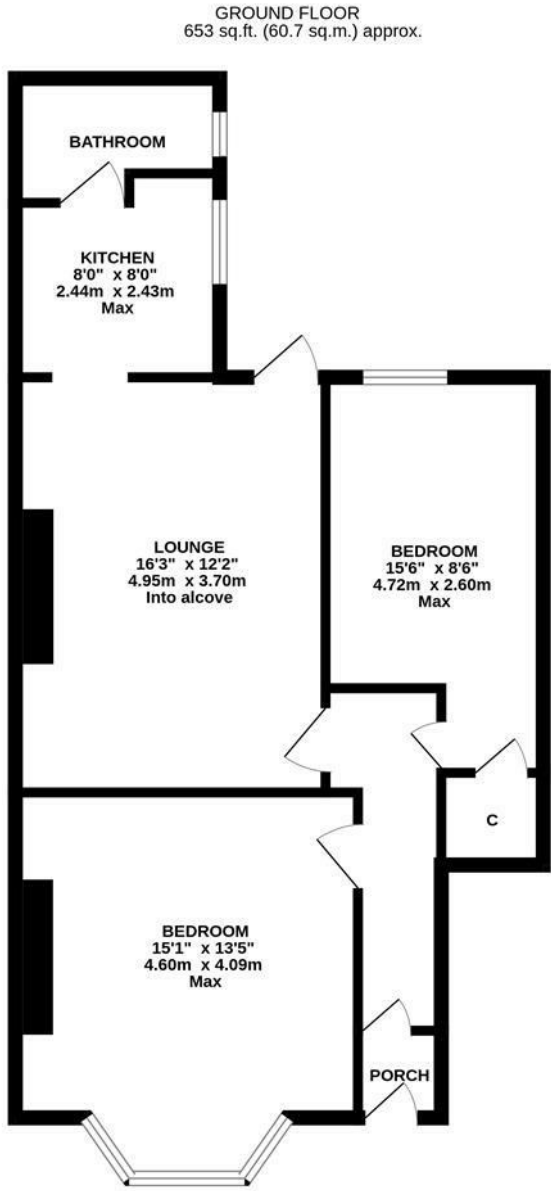


This charming two bedroom ground floor 'Tyneside' flat is ideally located on the west backing side of Stratford Road, Heaton. Hotspur Street, a stones-throw from the delightful Heaton Park and a short walk from the shops and amenities on Heaton Road. With nearby cafes, restaurants and transport links into the City Centre and beyond, Stratford Road is the perfect location for a variety of buyers.

The accommodation briefly comprises: entrance porch through to hallway; lounge with rear door access to the yard; kitchen with fitted units and work surfaces; bathroom complete with three piece suite; two bedrooms, bedroom one measuring 15ft with walk in bay and bedroom two with under-stairs storage cupboard. Externally, a front town garden and an enclosed west facing yard with fenced boundaries and views towards Hotspur Primary School

Ground Floor 'Tyneside' Flat | Two Bedrooms | 653 Sq ft (60.7m2) | Lounge | Kitchen | Bathroom | Two Bedrooms | Front Town Garden | West Facing Rear Yard | GCH | Popular Location | Council Tax Band A | Leasehold - Tyneside Lease with Peppercorn Rent - 967 Years Remaining | EPC: C

EPC: C



TOTAL FLOOR AREA : 653 sq.ft. (60.7 sq.m.) approx.

Whilst every attempt has been made to ensure the accuracy of the floorplan contained here, measurements of doors, windows, rooms and any other items are approximate and no responsibility is taken for any error, omission or mis-statement. This plan is for illustrative purposes only and should be used as such by any prospective purchaser. The services, systems and appliances shown have not been tested and no guarantee as to their operability or efficiency can be given.

Made with Matterport 2020/21



Offers Over £155,000

**IMPORTANT NOTE:** These particulars and the descriptions and measurements herein do not constitute representation and whilst every effort has been made to ensure accuracy, this cannot be guaranteed.

